

# MOANIN'

GUITAR

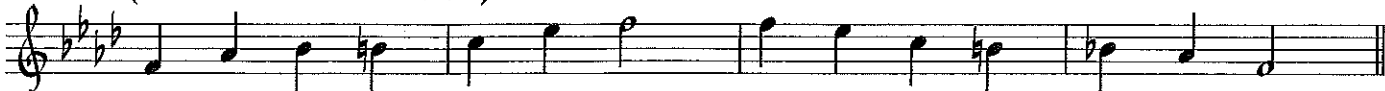
By **BOBBY TIMMONS**  
Arranged by **MICHAEL SWEENEY**

(UNISON PATTERN A)

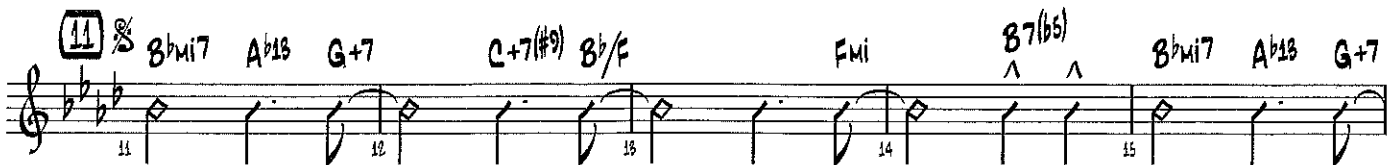
(MEDIUM SWING) (♩ =  $\overset{\text{3}}{\text{J}}\text{J}$ )



(UNISON PATTERN B - BLUES SCALE)



(MEDIUM SWING) (♩ =  $\overset{\text{3}}{\text{J}}\text{J}$ )



GUITAR

27 **Fmi6** **A<sup>b</sup>13** **G+7** **C+7(#9)** **Fmi6** **A<sup>b</sup>13** **G+7** **C+7(#9)**

26 27 28 (SIM.) 29 30

*m<sup>2</sup>*

**Fmi6** **A<sup>b</sup>13** **G+7** **C+7(#9)** **Fmi6/C** 1. 2. **Fmi6/C**

31 32 33 34 35

36 **B<sup>b</sup>mi7** **A<sup>b</sup>13** **G+7** **C+7(#9)** **B<sup>b</sup>/F** **Fmi6** **B7(b5)**

36 37 38 39

*m<sup>2</sup>*

**B<sup>b</sup>mi7** **A<sup>b</sup>13** **G+7** **Gmi7(b5)** **C+7(#9)** 44 **Fmi6** **A<sup>b</sup>13**

40 41 42 43 44 45

**G+7** **C7(#9)** **Fmi6** **A<sup>b</sup>13** **G+7** **C7(#9)** **Fmi6** **G+7** **C7(#9)**

46 47 48 49

**Fmi6** 52 6 1. *m<sup>2</sup>*

50 51 52 53 54 55

2. **C+7(#9)** **D.S. AL CODA** **CODA** **B7(b5)**

60 61 62

*m<sup>2</sup>*

**B<sup>b</sup>mi7** **A<sup>b</sup>13** **G+7** **G<sup>b</sup>7(#11)** **MOLTO RIT. E DIM.** *m<sup>2</sup>*

63 64 65 66 67